

The French Technological Mixed Network « Livestock and Environment » - LCA Action

Sandrine Espagnol - *IFIP*



Institutions of education

Institutions of research

Extension services

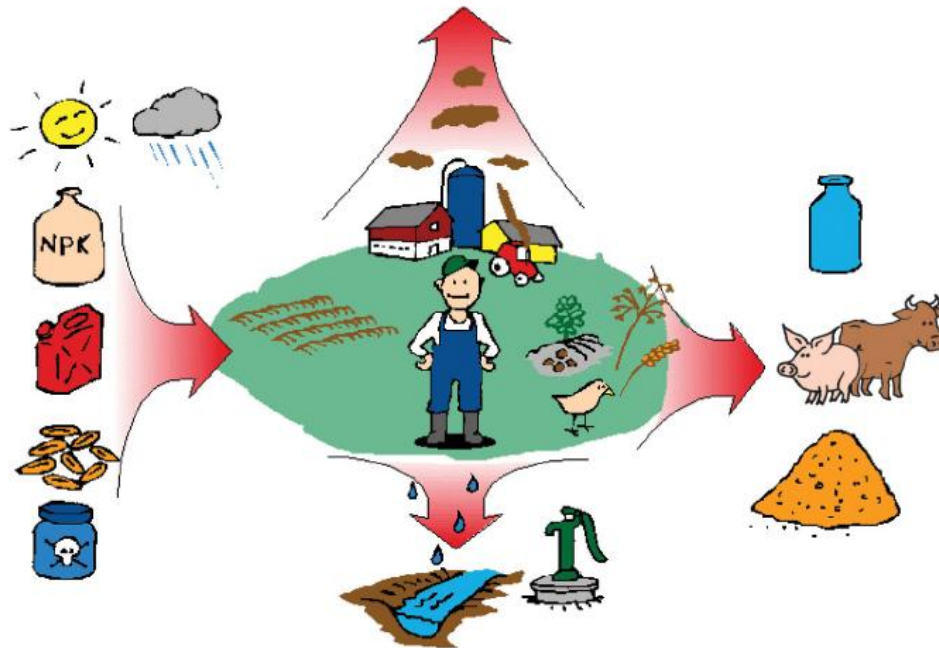


What is a Technological Mixed Network ?

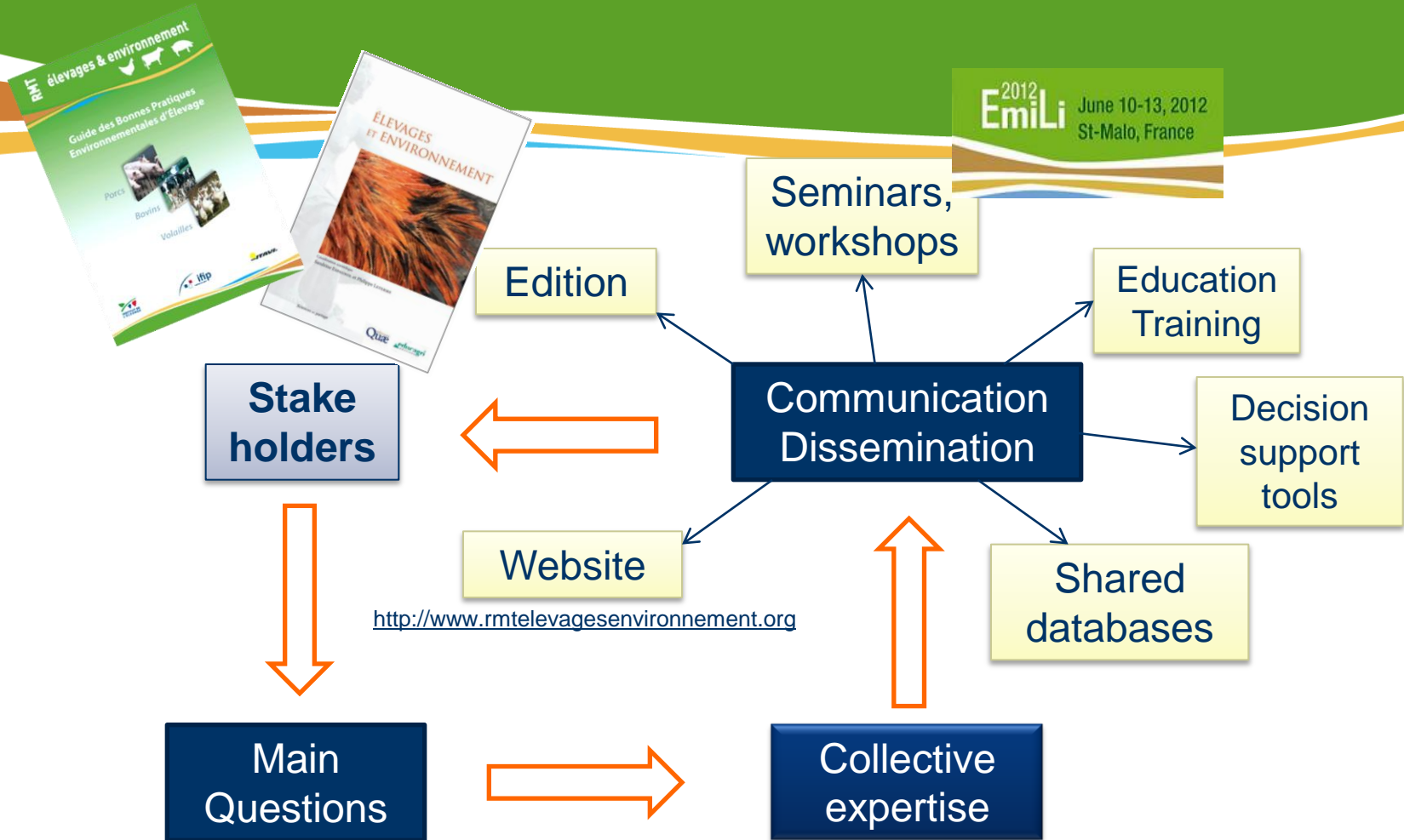
- **A new way of partnership (2006) between institutions of research & education and extension services in order to bring answers to the burning issues of a domain by:**
 - organizing and networking human and practical resources ;
 - developing synergies between actors ;
 - getting and sharing scientific equipments
- **The French government grants for animation of the network**

Why this TMN ?

- Elaborate and disseminate various tools to alleviate the environmental impacts of animal productions by improving processes of transformation of inputs into outputs

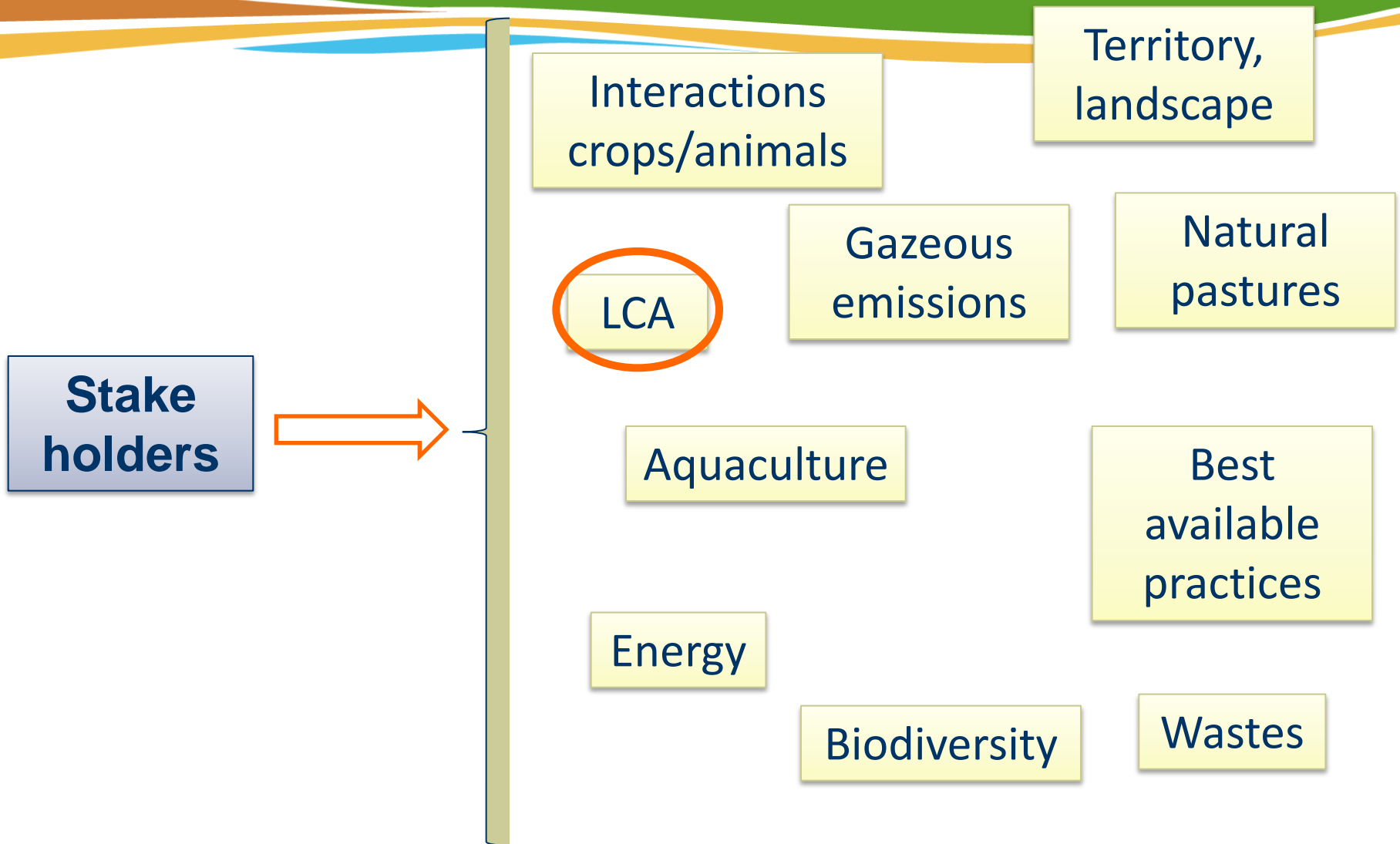


What the TMN did since 2007 ?



1. Environmental assessment for animal productions
2. Best available practices
3. Optimal strategies for feeding and waste processing
4. Animal farms in their territory

What are the main topics?



A specific action on LCA

■ **Context**

- Difficulty to apply LCA to agricultural activities
- Lack of data: problem of quantity and quality (adequacy with the French husbandries)

■ **Creation of an LCA network in 2009**

- Review of the available data
- Data sharing
- Discussion on methodological choices of LCA and their impact on results

■ **Starting of an action on the inputs (animal feed, fertilizers, etc.) of livestock in 2011**

- LCA data, production process, food composition, etc.
- A sharing agreement between partners: INRA, IDELE, IFIP, ITAVI, ARVALIS, CETIOM, UNIP, MDD, CRAB

Imported products Methodological questions

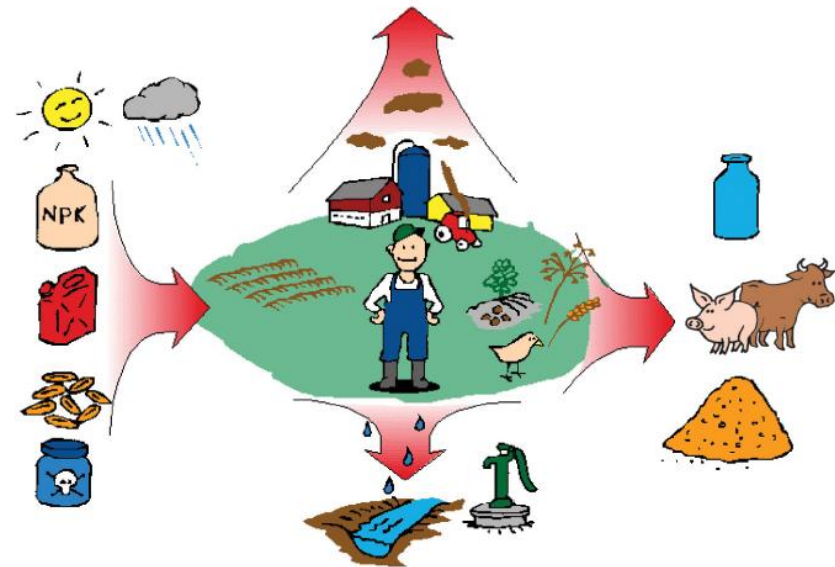
Anne Bouter



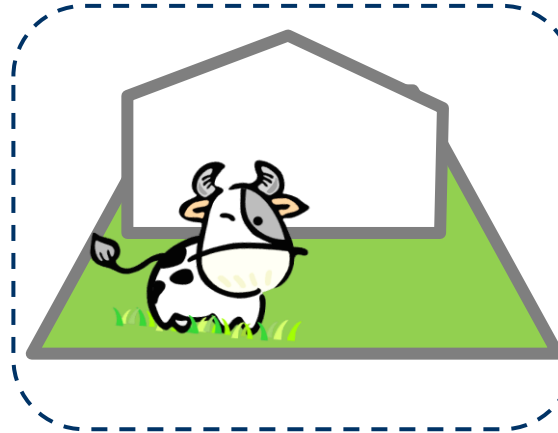
29th May 2012, Paris
Thematic workshop, n°2

What is a livestock input?

- **Feed**
 - Commercial feed (compound feed, dried feed, etc.)
 - Raw material, co-product
 - Silage, liter
 - Amino acids, minerals, vitamins
- **Agricultural inputs**
 - Fertilizers, plant protection product, seeds, irrigation
- **Building and Machinery**
 - Livestock building
 - Silage storage, process
 - Manure storage
 - Material, work
- **Livestock manure**
- **Resources: energy, water**
- **Sanitary and veterinary products**
- **Animal semen**



Example



Some imported products taking part in livestock inputs

- **Some imported products from Ecoinvent likely to be livestock inputs...**
 - Brazilian soy
 - US soy
 - Asian palm
 - US corn
 - US rapeseed
 - US wheat
 - German silage wheat
 - Brazilian molasses
 - ...
- **...lead to questions and methodological issues**



© 2001. Her Majesty the Queen in Right of Canada, Natural Resources Canada. / Sa Majesté la Reine du chef du Canada, Ressources naturelles Canada.



Methodological issues associated with imported products

■ Land use and land use change (deforestation)?

- Which method? (IPCC, ILCD Handbook, etc.)
- Where?
- When?
- Reference period?
- Depreciation period?
- Carbon stock and storage? (Forest and soil)
- Impacts allocation?
- Knowledge about previous cropping?
- Environmental mitigation?

■ Transportation?

- How? Refrigerated?
- Where?

Methodological issues associated with imported products

- **Origin of raw materials?**
 - Cultural practices
- **Stakes depend on the location?**
 - Land use
 - Biodiversity
 - Water consumption
- **Data quality?**
 - Traceability
 - Representativeness
- **Lack of data?**
 - Extrapolation

Your questions and our expectations for this workshop

■ Your questions

- When do we stop to investigate the data or trust the information we receive?
- How deal with the fact that some inputs contribute very low in mass to the global product but are on stage for marketing, or health communications, etc? Threshold?
- Origin of the products?
- Etc.

■ Expectations

- Raise all the questions you have or you encountered about this topic
- Be able to make the link with research
- Adopt a common methodological direction

Imported products
Methodological issues

Presentation of the participants

**Name, structure, expectations
(if not mentioned already)**

Agenda of the day

- **Introduction (10h30-11h30)**
 - Presentation of the French technological mixed network on Livestock and Environment
 - Introduction of the day
 - Presentation of the participants
- **Presentation n°1: Cécile Bessou, CIRAD (11h30-12h30)**
 - LCA of tropical agricultural products: Demand and expectations
- **Presentation n°2: Pauline Maupu, In Vivo (12h30-13h30)**
 - Feedbacks of performing LCA including imported products. Example of petfood
- **Presentation n°3: Theun Vellinga & Hans Blonk, Wageningen UR Livestock Research and BlonkMilieuAdvies (14h30-16h30)**
 - Presentation of the feed print tool
 - Methodological issues
 - Models
 - Databases
- **Key messages of the day (16h30-17h30)**

Imported products

Methodological questions

Good workshop session!